

CPI (Cultural Partnership Initiative)

The Ministry of Culture, Sports and Tourism Korea is implementing the CPI in order to prepare a foundation of mutual development through cultural interchange between Korean and Asia, America, Africa and Eastern European countries. CPI is comprised of 4 fields, which are General culture & Arts, Cultural Industry & Media, Tourism and Sport, and 18 programs and it gives an opportunity for exchanging your culture in the process of sharing the diverse culture.

<Curatorship Program for Museum Professionals>

- Participating in folklore field study, educational programs. exhibition planning and collection management & conservation

We are looking for curators from national museums or related institutions qualified to a responsible person speaking English or Korea, over 25 under 45. Holding position in related training sector within native country with an active interest for exchange with Korea

How to Apply:

- Resume and Recommendation from director
- Research proposal on planned research during stay in Korea

Deadline of application: March 21th , 2010 (Sunday)

Benefits for CPI Participants

- Round Trip airfare (Economy Class) to and from Korea
- Living expenses: About \$800 (900,000 Korean Won)
 - ▶ food, transportation, communication, taxes and public utilities are included
- Dormitory offered (by host institution)
- Training Expense (support for Korean language Class (200 hours) and professional training)
- Cost for field trip to cultural sites and remains of Korea
- Medical insurance

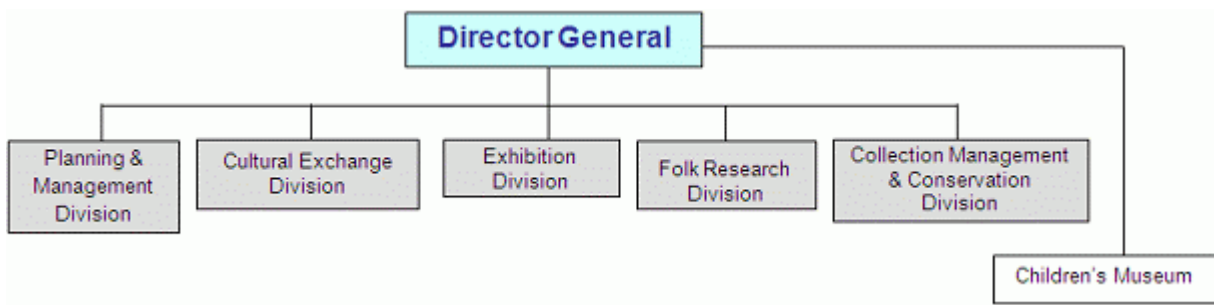
* Program Schedule*

PROGRAM/ MONTH	June	July	August	September	October	November
Orientation and preparation for program (CPI program, Host institution and curatorship program)						
Korean Language Class (200 Hours)		■	■	■	■	
Presentation for introducing participants' museums		■				
Curatorship Program		■	■	■	■	■
Cultural Field Trip	■	■	■	■	■	■
Monitoring meeting	■	■	■	■	■	■
Presentation final report						■

The National Folk Museum of Korea

The museum located inside Gyeongbokgung palace displays various relics from the prehistoric age to the modern times related to the life, culture, lifestyle, clothing and food of Koreans. There are more than 89,000 items including cultural artifacts, artwork and handicrafts of the Korean people.

<Organization>



Planning & Management Div.

- Plans, evaluates and improves major programs and activities
- Manages personnel, auditing and documentation
- Establishes budgets and performs accounting
- Manages and protects buildings and facilities

Cultural Exchange & Education Div.

- Develops, supervises and disseminates educational programs
- Performs PR activities
- Promotes international exchanges and overseas events

Exhibition Div.

- Oversees standing exhibits
- Organizes permanent & special exhibits
- Manages open-air exhibition
- Establishes Korea exhibits at foreign museums

Research Div.

- Researches traditional Korean folk culture and lifestyles
- Publishes reports and research papers on Korean folk culture
- Discovers the roots of traditional culture
- Hosts academic seminars

Collection Management Div.

- Collects and preserves artifacts
- Donates and loans out materials

- Manages the Folklife Archives
- Manages the Museum online system and homepage

Children's Museum

The National Folk Museum of Korea opened the children's folk museum on 2003 to provide various educational programs for school children and their teachers as well as their parents. The museum is a cultural place to benefit for all age levels of children. The exhibitions allowed the children to learn the aspects of traditional Korean folklore which was not covered at school. The permanent exhibition was renewed and reopened on December, 2008, based on the Korean traditional tale of Shimcheong.

The Children's Folk Museum turned into the Children's museum of Korea in February, 2009.

*For more information, Please visit the website www.nfm.go.kr
Also, visit CPI official website http://www.culturefriends.or.kr/cpi_eng/*